

[Click on the links above to see what's planned...](#)

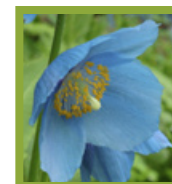
# You're invited to a Gardener's Garden Party

in comfortable shoes

to benefit Great Dixter's ongoing global  
gardening excellence programs

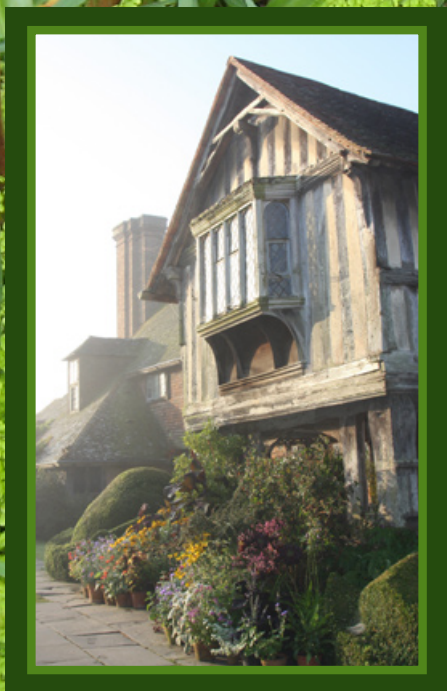
## Saturday, June 5, 2010

9:00am — 4:00pm / Little Compton, RI



# RSVP

by May 21, 2010





# Gardener's Garden Party Schedule

We have a fun day planned for passionate gardeners and friends. In the spirit of innovative gardening, come visit two of Rhode Island's unique, private gardens, have an opportunity to purchase rare plants from Rhode Island's own Opus Nursery and get a first-hand introduction to Great Dixter, one of Britain's most distinguished private gardens. [Click on the links above to learn more.](#)

## June 5, 2010

**9:00 – 11:30** Join Nate and Berta Atwater in their garden

**11:30 – 1:00** Meet at John Gwynne and Mikel Folcarelli 's Sakonnet garden to learn about Great Dixter. Aaron Bertelsen from Great Dixter and friends will share stories and pictures. There will be a Rare Plant Sale from Opus Nursery, which will include several favorite Great Dixter plants. Boxed lunches will be available for purchase (\$10, reserve in advance).

**1:00 – 4:00** Garden visit with John Gwynne and Mikel Folcarelli. Opus Nursery plant sale and Great Dixter presentation will be ongoing. British Tea and cookies and lively conversation.

**Dress:** Casual and practical garden attire. The event will take place rain or shine. Coastal Rhode Island can be foggy, cool and damp underfoot.

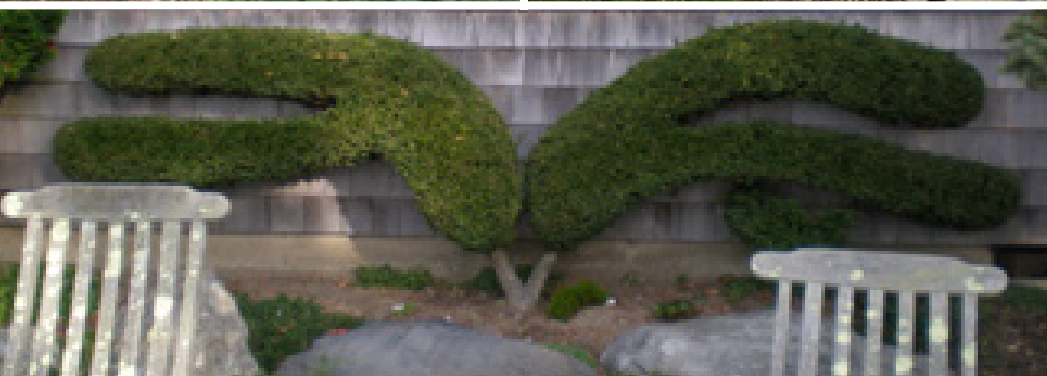
**Cost:** \$40 per person. Limited number available.

**Please RSVP by May 21, 2010. ([click here](#))**

# Atwater Garden

The garden of Berta and Nate Atwater is the best of the seaside mid-20th Century modernist gardens created by the well-known local designer Lloyd Lawton for the Atwaters. It is a pilgrimage location for those interested in tasteful, creative pruning of trees and shrubs, with mature *Cedrus*, *Cornus kousa* and native hollies being memorable. Notable are their beautiful rock gardens, the textural massings of woodland perennials and Nate's vegetable garden (its elegant compost structure is being copied at the White House).

PHOTOS: G KOLLER





# Sakonnet

Sakonnet, a hidden garden is a series of outdoor rooms with each space reflecting ongoing experiments with light, space, color mixing and growing rarely seen plants including faux tropicals (hardy palms, etc). Our visit should hit the *normal* peak of late spring bloom, with *Meconopsis*, zone 7 rhododendrons, and the silver meadow garden starting bloom. When not working in this RI garden John Gwynne designs innovative global conservation projects for the Wildlife Conservation Society and Mikel Folcarelli is global head of visual identity for Façonnable clothing.

Visit [www.sakonnetgarden.com](http://www.sakonnetgarden.com).





# Opus Nursery

Horticulturalist Ed Bowen, owner of Opus Nursery, has a discerning eye for wonderful and unusual plants. Some are from abroad, and Bowen is introducing them into the United States; others are distributed here only under limited circumstances. Some of the plants he propagates and sells out of Opus Nursery are of his own devising. They are out of the ordinary, yet Opus plants are approachable, relatively easy to grow, and garden worthy. Bowen will also offer for sale to our guests a variety of plants that appear in the legendary borders of Great Dixter — and can adapt to growing conditions in most of the northeast. He will be available to discuss the plants, as well as to offer tips for cultivation.

*Dominique Browning*

Visit [www.opustopiarium.com](http://www.opustopiarium.com).

*Ed Bowen's sons (Myles and Allsdair) help Ed tend to the plants.*





# Great Dixter

Surrounding the Edward Lutyens-designed 15th century manor houses, the gardens of Great Dixter continue to be one of England's most creative gardens for color-mixing of perennials and wildflower meadows. Created by the passionate gardener Christopher Lloyd, the gardens continue to improve every year with inspiration of Fergus Garrett and a wonderful Dixter staff.

To enable continuation of this horticultural excellence, UK's lottery board is matching private donations, including funds we raise in June. Visit [www.greatdixter.co.uk](http://www.greatdixter.co.uk) for more information, including special events and symposiums.





# Little Compton, RI

Little Compton, home of the Rhode Island Red chicken, is on the coast of Rhode Island, about 45 minutes southeast of Providence. The area enjoys the benign proximity to the Gulf Stream and is a picturesque, rural summer community where several gardens push their luck in growing semi-hardy plants. Early June is normally the climax of spring flowering (spring is later here because of the benign Zone 7 Gulf Stream) and will hopefully hit the blooming of blue *Meconopsis* poppies.

## Nearby Attractions

Newport is a 45 minute drive from Little Compton. Attractions include the Newport Preservation Society's Newport Mansions ([www.newportmansions.org](http://www.newportmansions.org)) where you can visit Green Animals Topiary Garden along with Chateau-sur-Mer, The Breakers, Rosecliff and others.

Blithewold Mansion, Gardens and Arboretum ([www.blithewold.org](http://www.blithewold.org)) is 30 minutes from Little Compton. and includes diverse gardens, specimen trees, and a 45-room English style manor house.

## Places to Stay

- **Stone House** ([www.stonehouse1854.com](http://www.stonehouse1854.com)) is a high-end renovated resort with a fancy restaurant and spa located in Little Compton
- **Hampton Inn** located about 45 minutes away in Middletown, RI
- **Howard Johnson's Motel** is also located in Middletown, RI
- There are also numerous lodgings available in Newport, RI

Please email [dixterfundraiser@gmail.com](mailto:dixterfundraiser@gmail.com) for further information.